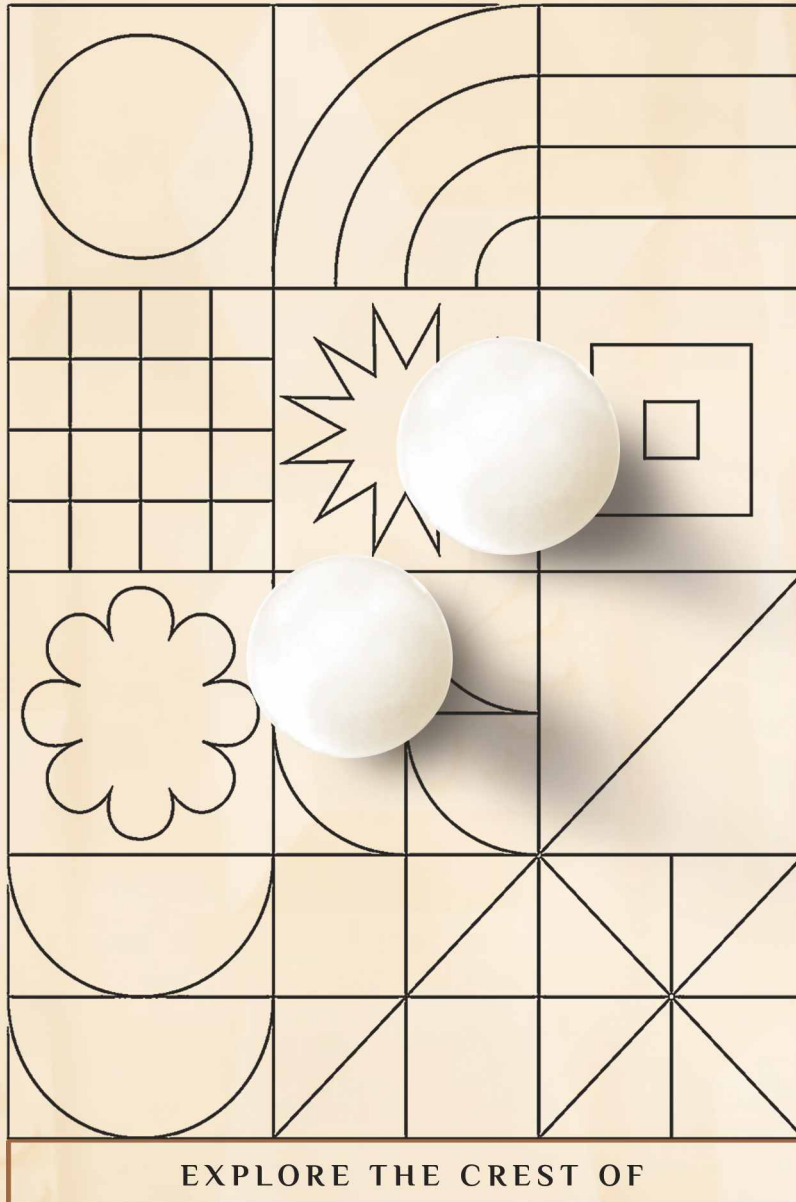


# MARBOGRESS

SELF COLOURED SURFACES 



# MAGNIFICENCE

3D GLOSSY COLLECTION



# About Our **3D** Collection

Elevate your space to new dimensions with our mesmerizing 3D Collection Tiles! Crafted with precision and designed to captivate, these tiles add depth, texture, and visual interest to any room.

Create a modern focal point in your living room with our striking 3D feature wall tiles. Add dimension to your kitchen backsplash with our stylish and durable 3D tiles, available in a variety of colors and patterns.

Make a statement in your bathroom with our luxurious 3D tiles, perfect for shower walls or accent areas.

## 3D Tiles **Features**

 Resistance to Deep Abrasion

 Easy to Install

 Resists Harsh Weather Conditions

 Resists Water

 Stain Resistance

 Hygienic

 Resistance to Thermal Shocks

 Lightweight and Easy to Handle

 Resistance to Acids and Bases

 Eco-Friendly

 Easy Cleaning

 Resists Fire

## 3D Tiles **Applications**

 Reception

 Kitchen

 Living Room

 Sallon & Spa

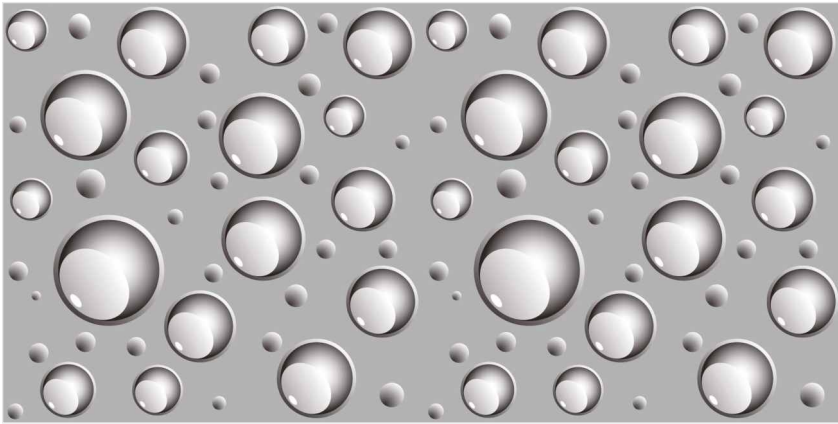
 Offices

 Restaurants & Hotel

 Bathroom

 Showroom

 Gymnasium

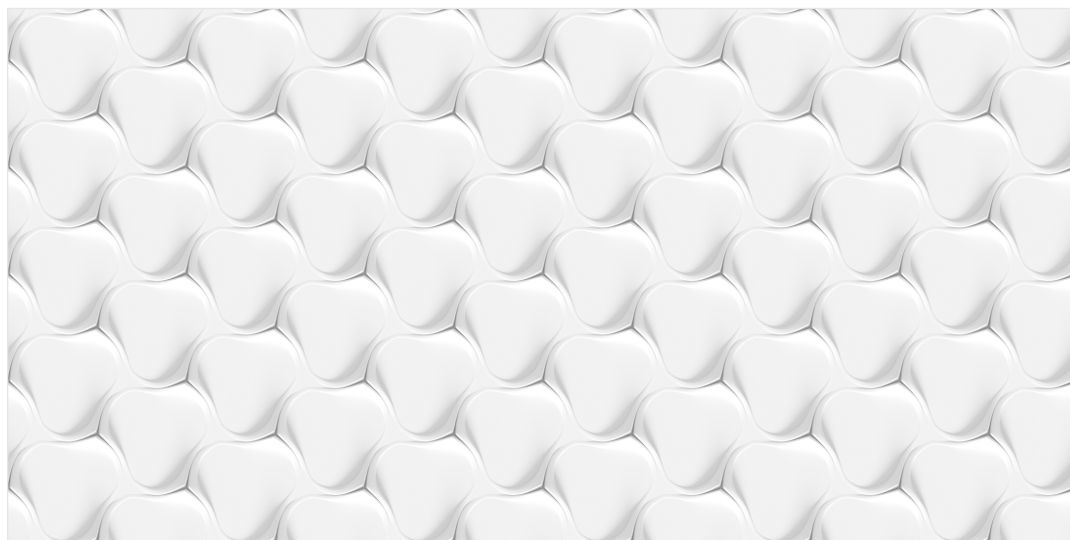


Tiles  
**1601**

Surface  
**Polished**

Composition  
**1 Pcs.**





Tiles

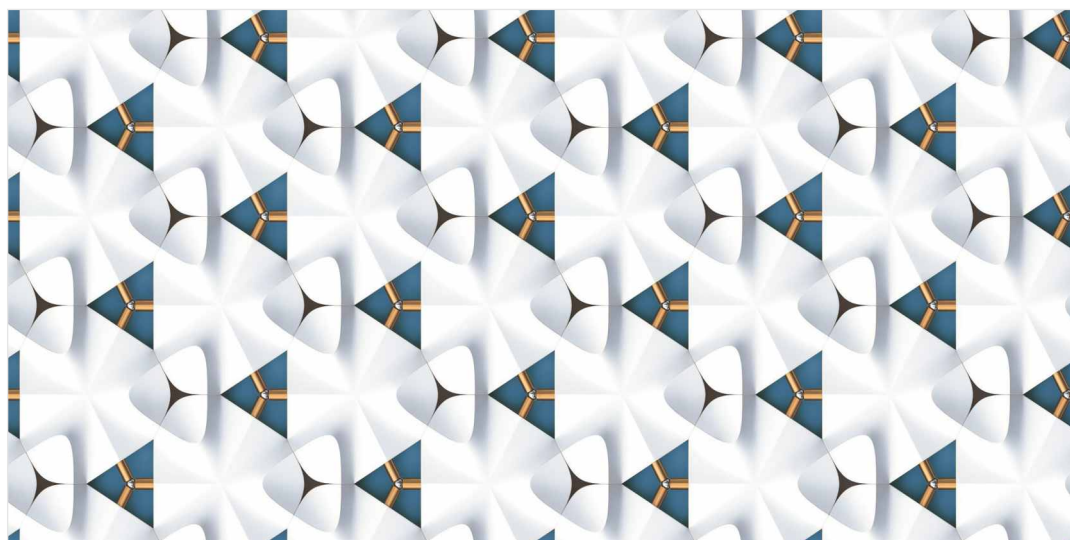
**1602**

Surface

**Polished**

Composition

**1 Pcs.**



Tiles

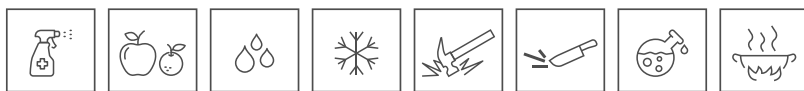
**1603**

Surface

**Polished**

Composition

**1 Pcs.**



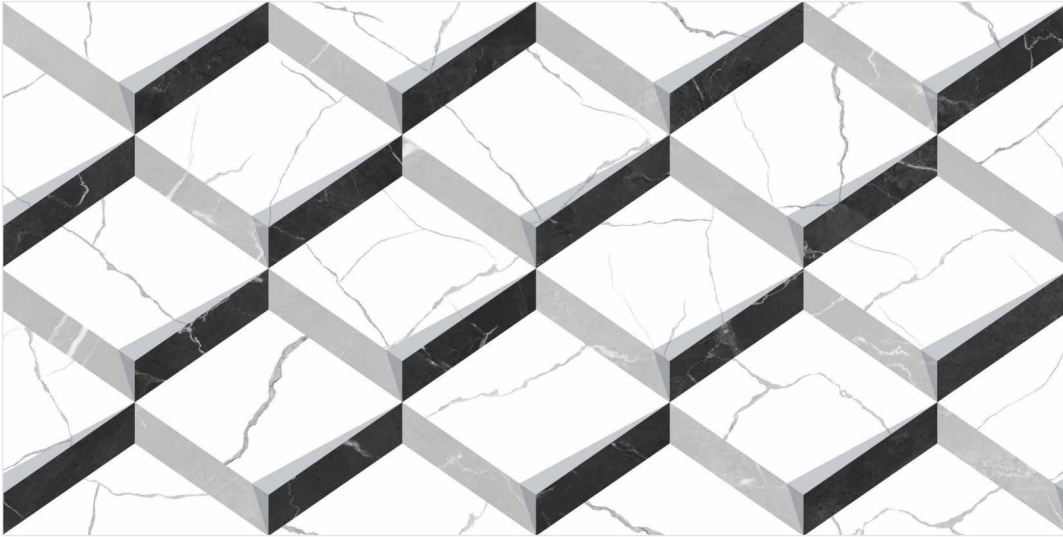


Tiles  
**1604**

Surface  
**Polished**

Composition  
**1 Pcs.**





Tiles  
**1605**

Surface  
**Polished**

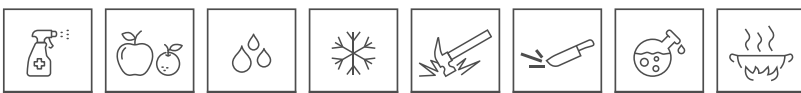
Composition  
**1 Pcs.**



Tiles  
**1606**

Surface  
**Polished**

Composition  
**1 Pcs.**





Tiles  
**1607**

Surface  
**Polished**

Composition  
**1 Pcs.**





Tiles  
**1608**

Surface  
**Polished**

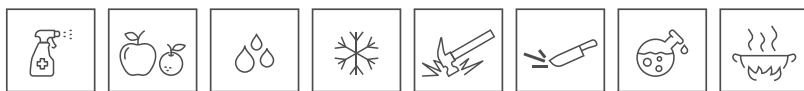
Composition  
**1 Pcs.**



Tiles  
**1610**

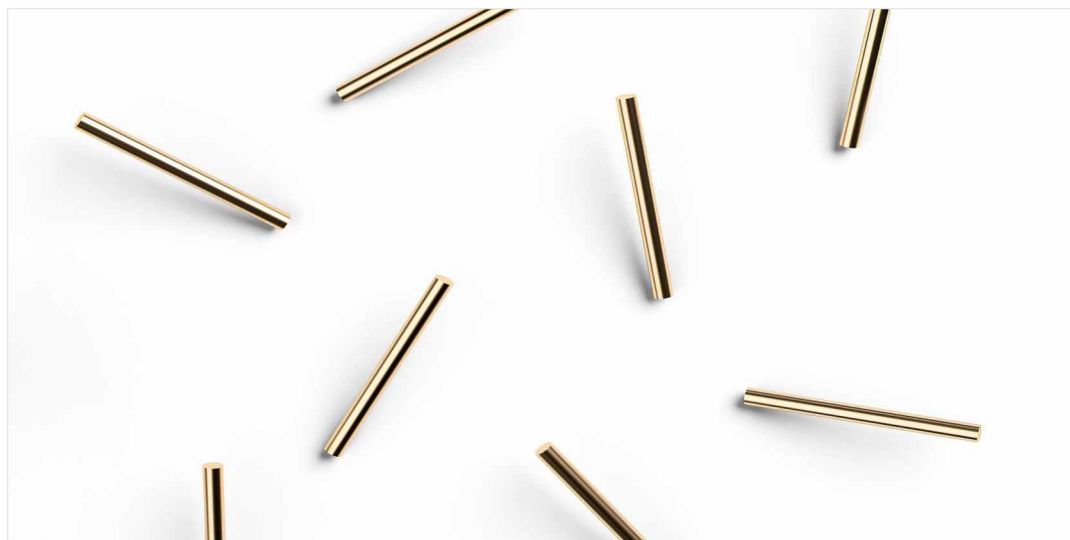
Surface  
**Polished**

Composition  
**1 Pcs.**









Tiles

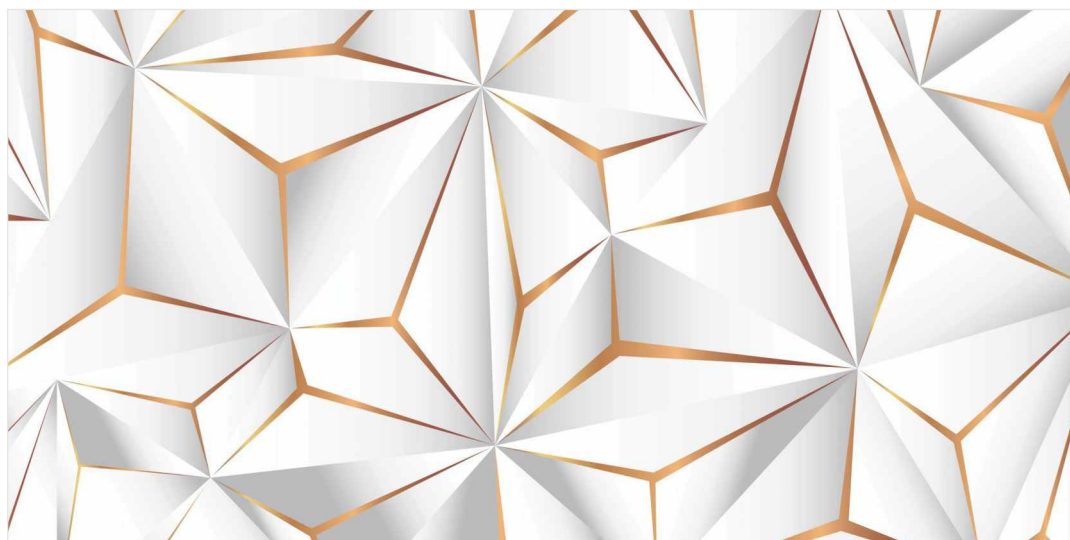
**1611**

Surface

**Polished**

Composition

**1 Pcs.**



Tiles

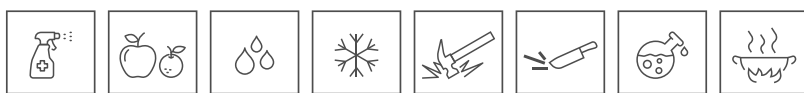
**1612**

Surface

**Polished**

Composition

**1 Pcs.**





Tiles  
**1614**

Surface  
**Polished**

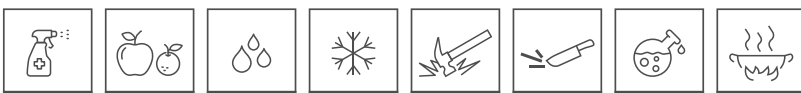
Composition  
**1 Pcs.**



Tiles  
**1615**

Surface  
**Polished**

Composition  
**1 Pcs.**





Tiles  
**1616**

Surface  
**Polished**

Composition  
**1 Pcs.**





Tiles  
**1619**

Surface  
**Polished**

Composition  
**1 Pcs.**

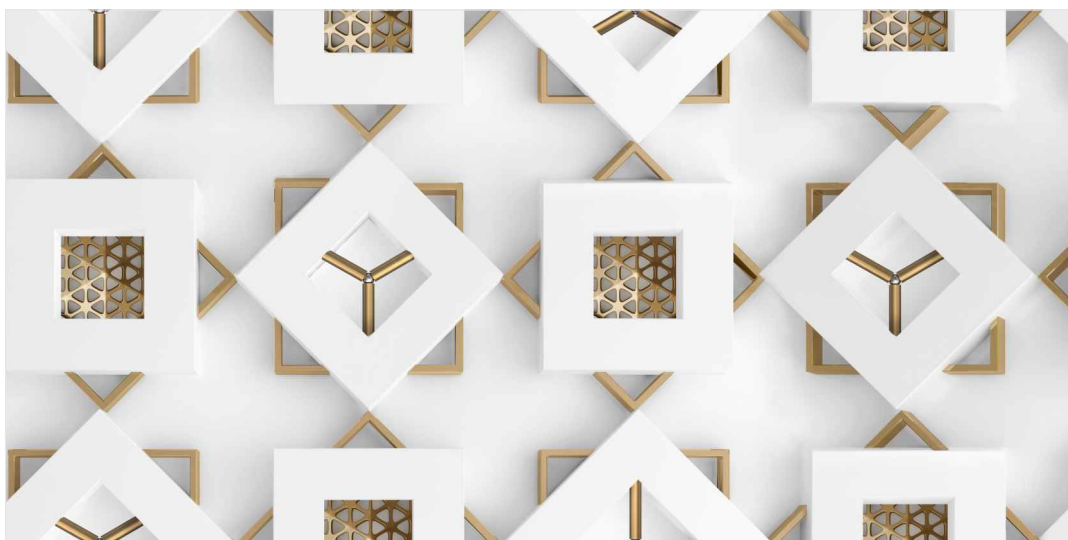




Tiles  
**1620**

Surface  
**Polished**

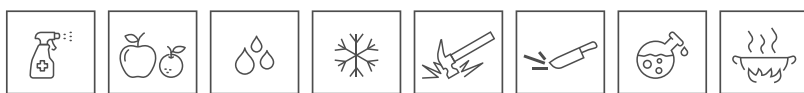
Composition  
**1 Pcs.**



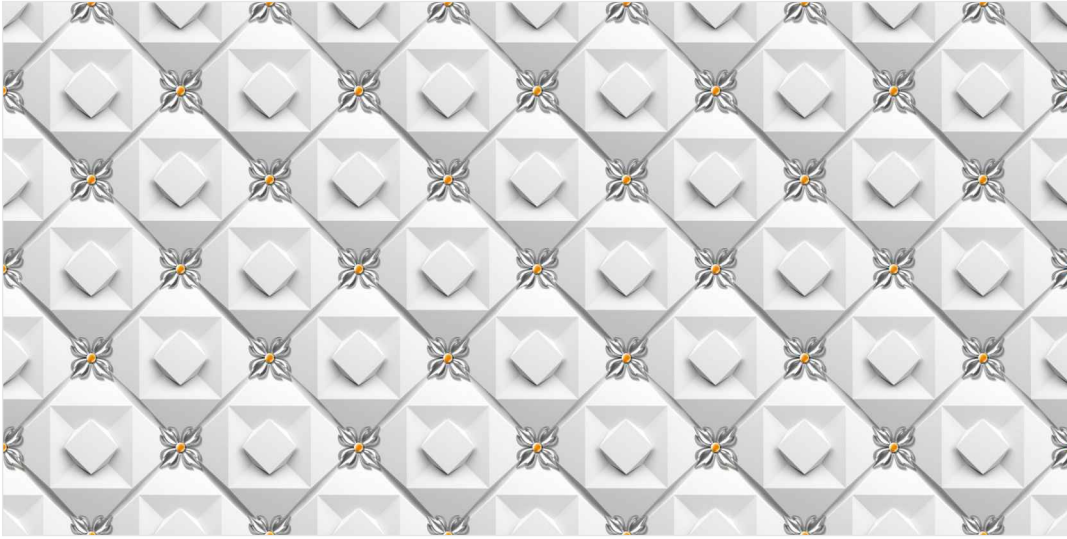
Tiles  
**1622**

Surface  
**Polished**

Composition  
**1 Pcs.**



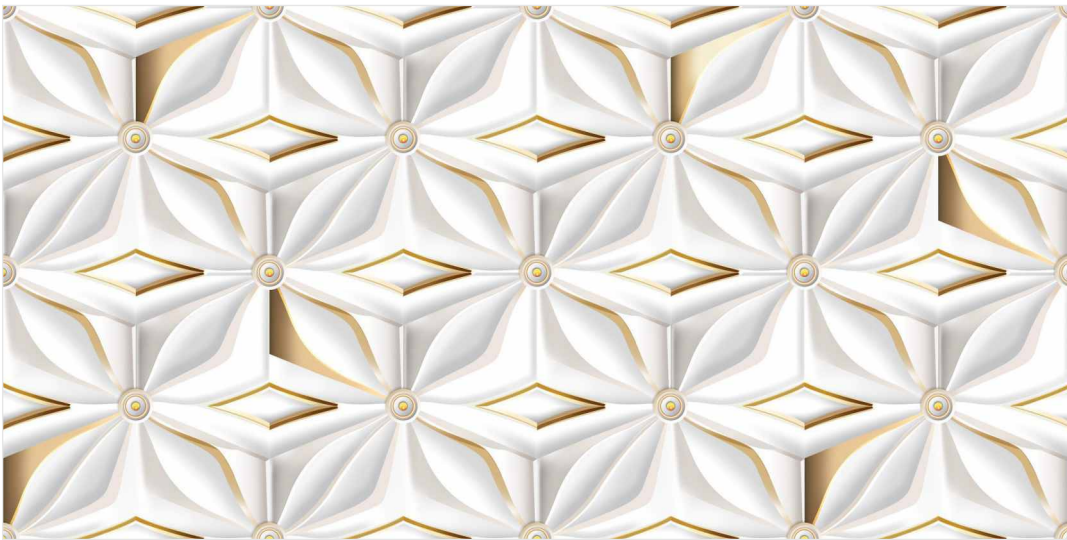




Tiles  
**1623**

Surface  
**Polished**

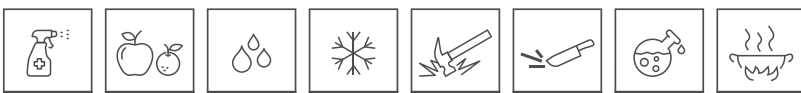
Composition  
**1 Pcs.**



Tiles  
**1624**

Surface  
**Polished**

Composition  
**1 Pcs.**







Tiles  
**1625**

Surface  
**Polished**

Composition  
**1 Pcs.**

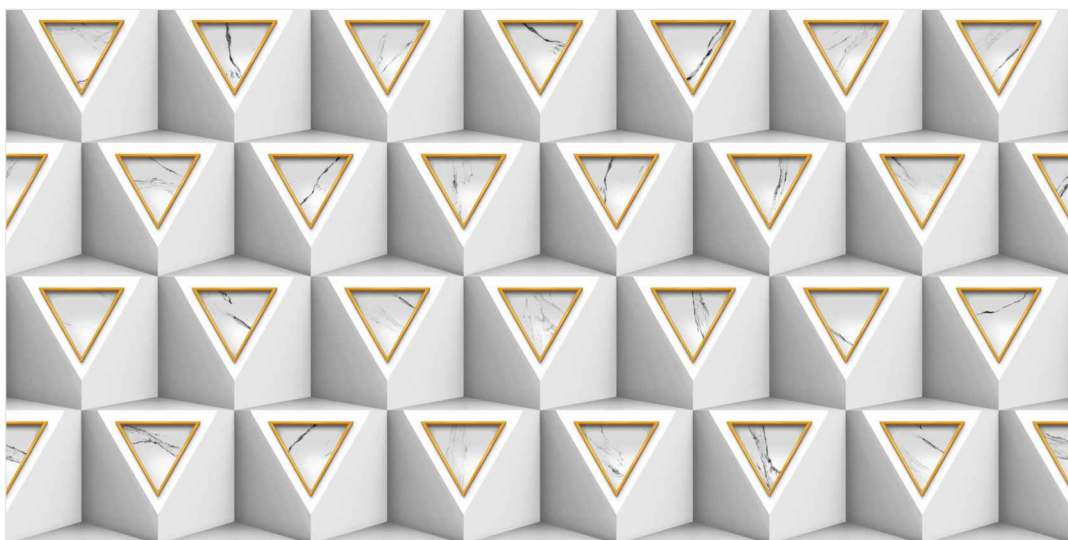




Tiles  
**1627**

Surface  
**Polished**

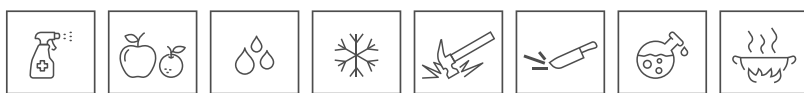
Composition  
**1 Pcs.**



Tiles  
**1628**

Surface  
**Polished**

Composition  
**1 Pcs.**



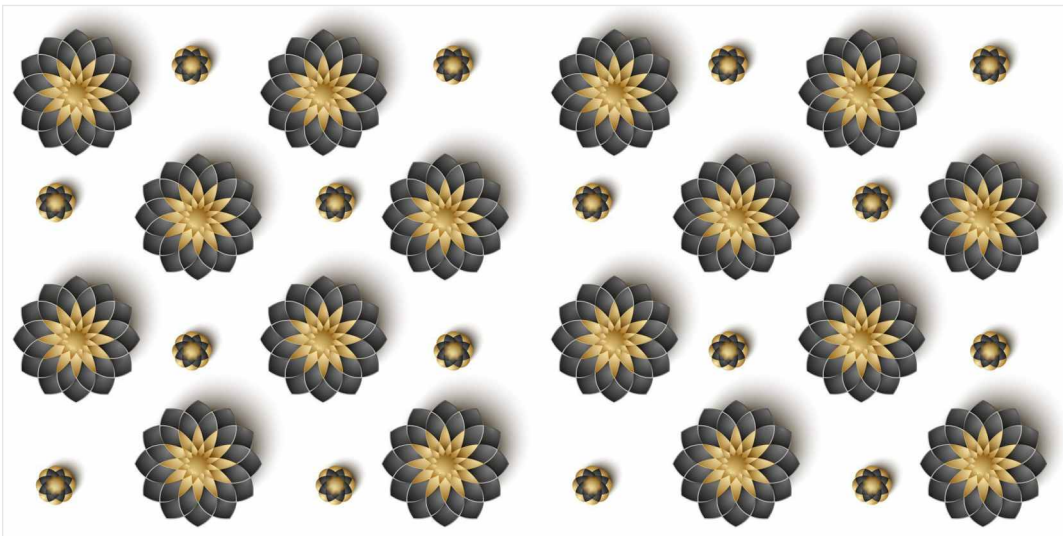




Tiles  
**1629**

Surface  
**Polished**

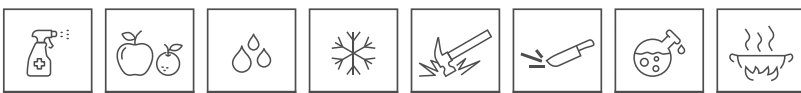
Composition  
**1 Pcs.**

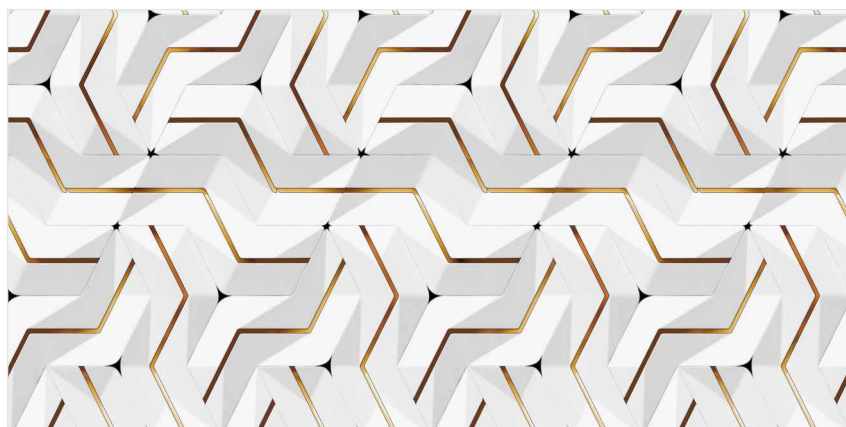


Tiles  
**1630**

Surface  
**Polished**

Composition  
**1 Pcs.**





Tiles  
**1631**

Surface  
**Polished**

Composition  
**1 Pcs.**



## TECHNICAL SPECIFICATION

CHARACTERISTIC	STANDARD AS PER ISO 13006:2018/ EN14411 Gr.Bla	MEAN VALUE	TEST METHOD
<b>Regulatory Properties</b>			
Deviation in length and width	± 0.30 % (±1.00mm)	± 0.10 %	ISO 10545-2
Deviation in thickness	± 5.00 % (±0.50mm)	± 4.00 %	ISO 10545-2
Straightness in side	± 0.30 % (±0.80mm)	± 0.10 %	ISO 10545-2
Rectangularity	± 0.30 % (±1.50mm)	± 0.10 %	ISO 10545-2
Surface flatness central curvature	± 0.40 % (±1.80mm)	± 0.20 %	ISO 10545-2
Surface flatness edge curvature	± 0.40 % (±1.80mm)	± 0.20 %	ISO 10545-2
Surface flatness warpage	± 0.40 % (±1.80mm)	± 0.10 %	ISO 10545-2
Surface quality	> 95% defects free	> 95% defects free	ISO 10545-2
Small Color Difference(For Plain Color)	ΔE < 1.00	ΔE < 0.30	ISO 10545-16
Glossiness (Polished)	as per mfg.	Gloss Value > 90	Glossmeter 60°
Glossiness (Matt)	as per mfg.	3° < GLOSS < 7°	Glossmeter 60°
Glossiness (satin/Posh)	as per mfg.	7° < GLOSS < 18°	Glossmeter 60°
<b>Structural Properties</b>			
Water absorption	0.50 % ≤ Ev ≤ 3.00 %	0.060 % ≤ Ev ≤ 3.00 %	ISO 10545-3
Bulk density	as per mfg.	> 2.28 gm/cc	ISO 10545-3
<b>Massive Mechanical Properties</b>			
Modulus of rupture	Min. 30.0 N/mm <sup>2</sup>	Min. 35.0 N/mm <sup>2</sup>	ISO 10545-4
Breaking strength thickness ≥7.5	Min. 700.0 N	Min. 1000.0 N	ISO 10545-4
Breaking strength thickness ≥7.5	Min. 1100.0 N	Min. 1300.0 N	ISO 10545-4
Breaking strength thickness ≥7.5(For ≥15mm)	Min. 1100.0 N	Min. 1800.0 N	ISO 10545-4
<b>Surface Mechanical Properties</b>			
MOH'S hardness	as per mfg.	Polished Min 4* / Satin, Posh & Matt Min 6	BS EN 15771
Surface abrasion resistance	as per mfg.	Polish Min. Class 2, Satin & Posh Min. Class 3, & Matt Min. Class 4	ISO 10545-7
Deep abrasion resistance	Max. 175mm <sup>3</sup>	Max. 132mm <sup>3</sup>	ISO 10545-6
<b>Thermal Hydrometric Properties</b>			
Moisture expansion	Max. 0.06%(0.6mm/m)	0.02mm/m	ISO 10545-10
Thermal expansion(COE) at 100°C	as per mfg.	Max. 6.0 x 10 <sup>-6</sup>	ISO 10545-8
Thermal shock resistance	Min. 10 Cycle	Min. 10 Cycle	ISO 10545-9
Impact resistance(COR)	Min. 0.55	Min. 0.55	ISO 10545-5
Frost resistance	as per mfg.	Frost Proof	ISO 10545-12
<b>Chemical Properties</b>			
Resistance to staining glazed	Min. Class 3	Min. Class 4	ISO 10545-14
Resistance to household chemicals & swimming pool salts glazed	Min. Class GB	Min. Class GA	ISO 10545-13
Resistance to low concentrate acid and alkalis glazed	as per mfg.	Min. Class GLA**	ISO 10545-13
Resistance to high concentrate acid and alkalis unglazed	as per mfg.	Min. Class GHB**	ISO 10545-13
<b>Safety Properties</b>			
Skid resistance (COF-WET PENDULAM)##	as per mfg.	Glossy P0(<12), Satin, Posh ≥P1(12-24) Matt ≥P2(25-34)	BS 7976-2
Slip resistance - (Satin / Matt (DCOF) (R value)##	as per mfg.	R9 to R13**	DIN 51130
Fire resistance	as per mfg.	Fire Proof	N.A.

## PACKING DETAILS

PRODUCT	SIZE	THICKNESS	TILES / BOX	COVERAGE AREA / BOX	WEIGHT
GVT-PGVT	600x 1200mm	9mm	2 pcs.	1.44 sq. mtr.	27 KG (APPROX)

# THANK YOU



**MARBOGRESS**  
SELF COLOURED SURFACES

+ (91) 95376 30300 | [marbogresstilesllp@gmail.com](mailto:marbogresstilesllp@gmail.com) | [www.marbogresstilesllp.com](http://www.marbogresstilesllp.com)

Ceramic Empire Office no.402 Behind Swastik  
complex Halwad Road, Morbi-363642