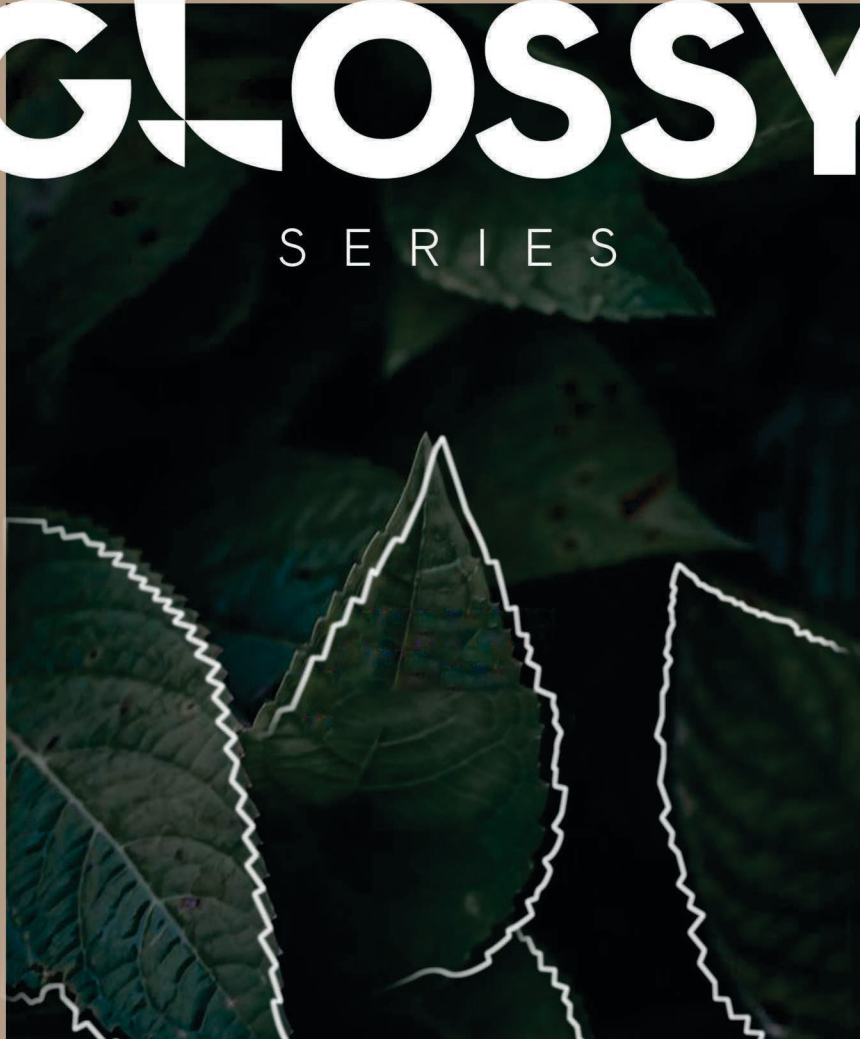


**MARBOGRESS**  
SELF COLOURED SURFACES

NEW COLLECTION OF

# GLOSSY

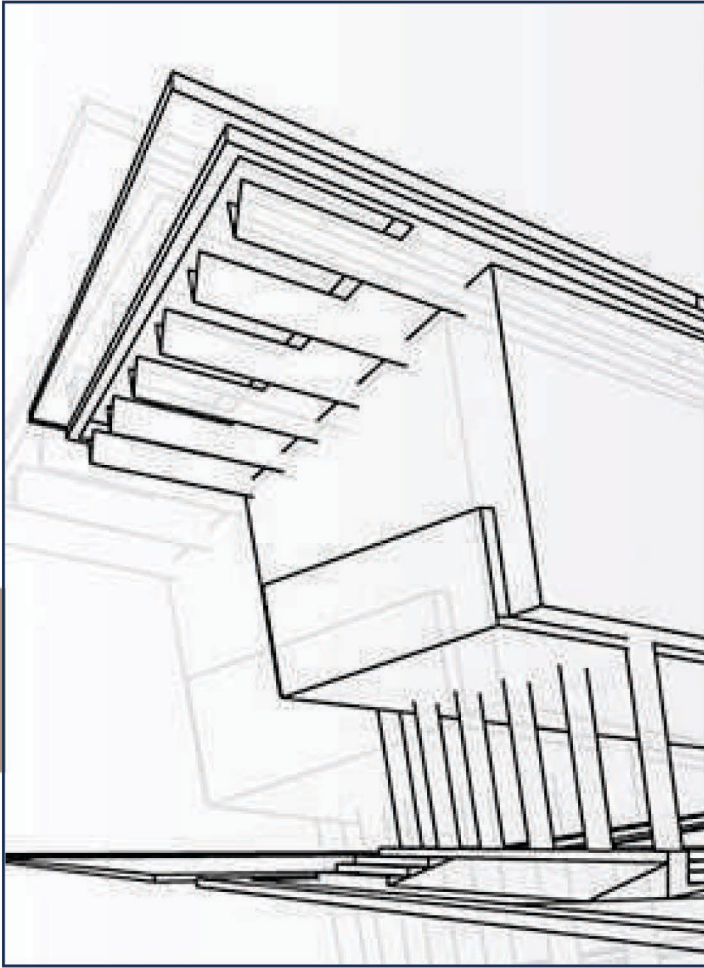
SERIES



[www.marbogresstilesllp.com](http://www.marbogresstilesllp.com)



**100%**  
WATER PROOF



## THE STORY OF **MARBORESS**

## THE FUTURE OF **STYLISH WALL**

---

DESIGN.  
INNOVATE.  
INSPIRE

Welcome To Marbogress, Where Innovation Meets Tradition In The World Of Ceramic Tiles. With Decades Of Expertise, We Are Committed To Crafting High-quality Ceramic Tiles That Elevate Any Space, From Luxurious Homes To Dynamic Commercial Environments.

Our Journey Began With A Passion For Design And A Dedication To Superior Craftsmanship. We Combine Cutting-edge Technology With Time-honored Techniques To Create Tiles That Are Not Only Visually Stunning But Also Durable And Functional. Our Diverse Range Of Designs, Colors, And Finishes Ensures That You Will Find The Perfect Tile To Match Your Unique Style And Needs.

# MARBOGRESS CERAMIC

## OUR MISSION

We are committed to our objective of delivering an experience to our clients through our exceptional products and quality.

Our mission is to empower every space with the power of excellence and innovation.

## OUR VISION

We envision becoming the front-runners of the ceramic Wall tiles solution industry through our ceaseless efforts

We envision facilitating homes and spaces with enhanced lifestyle solutions through our products.

**15+**

Years  
experience

**500+**

Tile designs in  
different finish

**20+**

Export  
Countries

**45000+**

boxes per day  
production



# SHINE ON! THE ULTIMATE GLOSSY TILE SERIES

Transform your interiors with our Glossy Tiles Series, a perfect blend of sophistication and durability. Designed for modern homes, luxurious hotels, and stylish commercial spaces, our glossy tiles add a touch of brilliance to every corner.

**300X450MM**

**FINISH : GLOSSY**



**100%**  
**WATER PROOF**



---

[www.marbogresstilesllp.com](http://www.marbogresstilesllp.com)





( LT )



( HL )

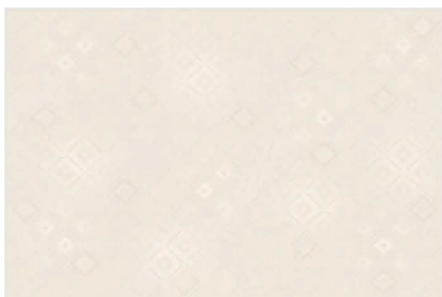
TILES  
6896

FINISH  
GLOSSY

SIZE  
300X450MM



( DK )



( LT )



( HL )

TILES  
6897

FINISH  
GLOSSY

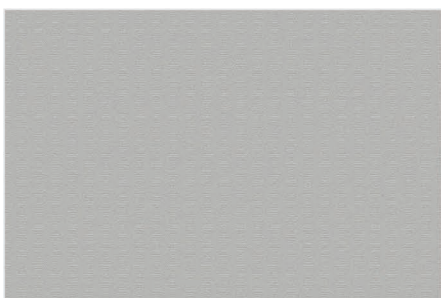
SIZE  
300X450MM



( DK )



( HL )



( DK )

TILES

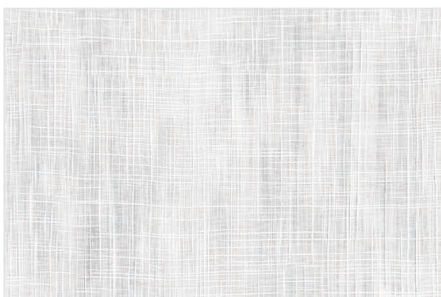
6898

FINISH

GLOSSY

SIZE

300X450MM



( LT )



( HL )

TILES

6899

FINISH

GLOSSY

SIZE

300X450MM



( LT )



( HL )

TILES  
6900

FINISH  
GLOSSY

SIZE  
300X450MM



( DK )



( LT )

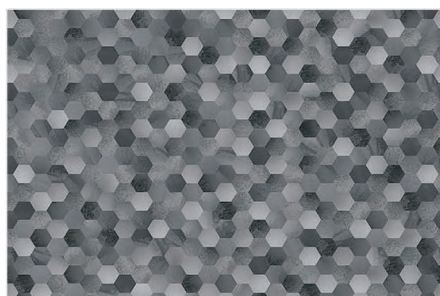


( HL )

TILES  
6901

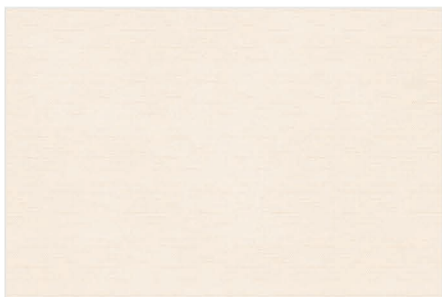
FINISH  
GLOSSY

SIZE  
300X450MM



( DK )





( LT )



( HL )

TILES  
6902

FINISH  
GLOSSY

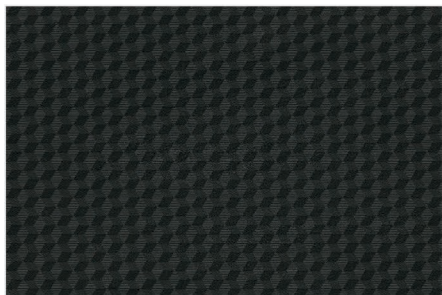
SIZE  
300X450MM



( DK )



( HL )

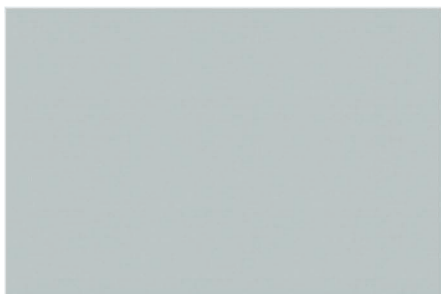


( DK )

TILES  
6903

FINISH  
GLOSSY

SIZE  
300X450MM



( LT )

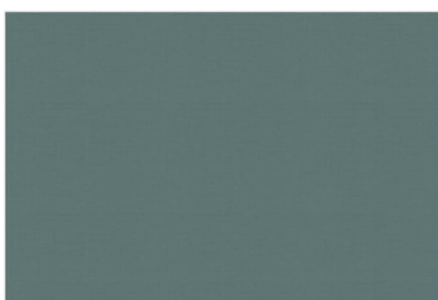
TILES  
6904

FINISH  
GLOSSY

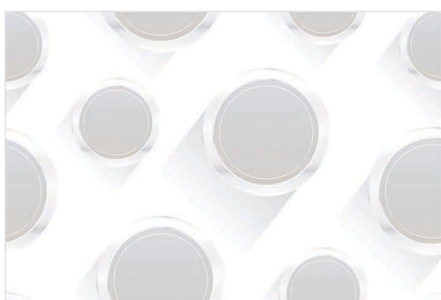
SIZE  
300X450MM



( HL )



( DK )



( LT )

TILES  
6905

FINISH  
GLOSSY

SIZE  
300X450MM



( HL )



( DK )





( LT )

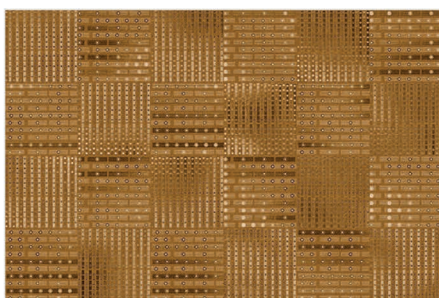


( HL )

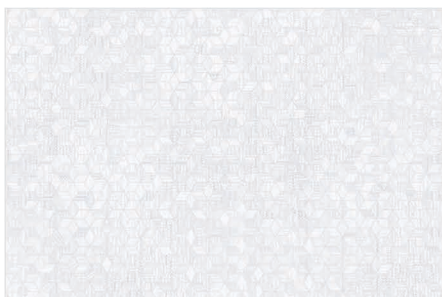
TILES  
6906

FINISH  
GLOSSY

SIZE  
300X450MM



( DK )



( LT )

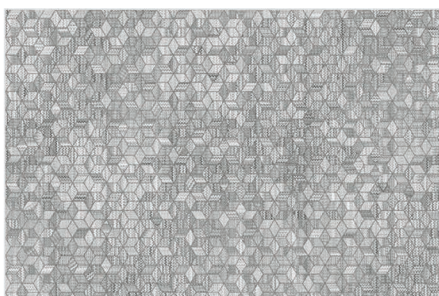


( HL )

TILES  
6907

FINISH  
GLOSSY

SIZE  
300X450MM



( DK )



( LT )

TILES  
6908

FINISH  
GLOSSY

SIZE  
300X450MM



( HL )



( DK )



( HL )

TILES  
6909

FINISH  
GLOSSY

SIZE  
300X450MM



( DK )



( LT )

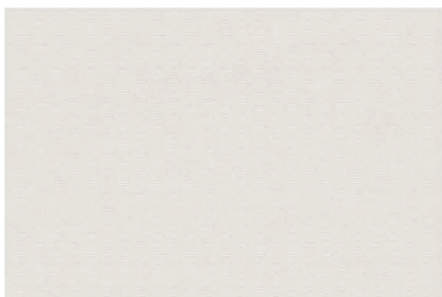


( HL )

TILES  
6910

FINISH  
GLOSSY

SIZE  
300X450MM



( LT )

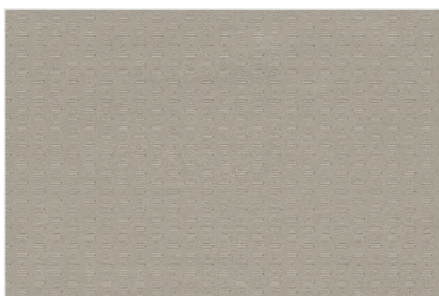


( HL )

TILES  
6911

FINISH  
GLOSSY

SIZE  
300X450MM



( DK )





( LT )



( HL )

TILES  
6912

FINISH  
GLOSSY

SIZE  
300X450MM

## Technical Specification

CHARACTERISTICS	REQUIRMENT AS PER ISO-13006/EN14411 GROUP BIa	OUR VALUE	ISO / EN TESTING METHOD
DIMENSION AND SURFACE QUALITY			
Deviation in length & width	(+-0.5%)	(+-0.3%)	ISO- 10545- 2
Deviation in thickness	(+-5.0%)	(+-4.0%)	ISO- 10545- 2
Straightness in side	(+-0.5%)	(+-0.1%)	ISO- 10545- 2
Rectangularity	(+-0.5%)	(+-0.1%)	ISO- 10545- 2
Surface flatness	(+-0.5%)	(+-0.2%)	ISO- 10545- 2
Glossiness	MIN 90%	Pass	Glossometer
STRUCTURAL PROPERTIES			
Water absorption	<0.50%	<0.05%	ISO- 10545- 3
MESSIVE MECHANICAL PROPERTIES			
Modulus of repture	MIN. 35N/mm2	MIN. 35N/mm2	ISO- 10545- 4
Breaking strength	MIN. 1300N	MIN. 2000N	ISO- 10545- 4
Impact resistance	As per mfg.	MIN. 0.55	ISO- 10545- 5
SURFACE MECHANICAL PROPERTIES			
Surface abrasion Resistance	MIN. class -2	MIN. Class -3	ISO- 10545- 7
Moh's hardness	MIN. 5	MIN. 6	En101
CHEMICAL PROPERTIES			
Frost Resistance	Required	Pass	ISO- 10545- 12
Household chemicals Resistance	MIN. class AA	Pass	ISO- 10545- 13
Stain Resistance	Resistant	Resistant	ISO- 10545- 14
THERMAL PROPERTIES			
Thermal shock Resistance	10 Cycle	Pass	ISO- 10545- 9
Thermal expansion (COE)	MAX.9.0x10.6	MAX.6.5x10.6	ISO- 10545- 8
Moisture expantion	Nill	Nill	ISO- 10545- 10
PHYSICAL PROPERTIES			
Box Weight	10.8kg	Per / 1Box	-
Tile Thickness	7.5mm	Per / 1pc	-





# Thank You

CONTACT US : +91 95376 30300

---

[www.marbogresstileslp.com](http://www.marbogresstileslp.com)